

# East Area Planning Committee Presentation

[www.oxford.gov.uk](http://www.oxford.gov.uk)



**Reference Number: 19/02003/FUL**

**Site Address: Plot 16, Oxford Science  
Park, Robert Robinson Avenue**

39

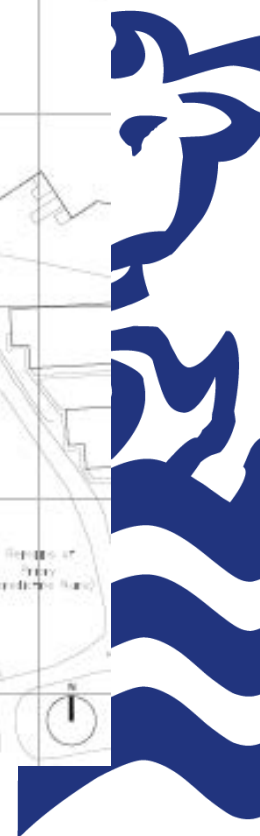


# Location Plan

ord.gov.uk



ORD  
TY  
NCIL



# Aerial View





# Site Photos

gov.uk



**OXFORD  
CITY  
COUNCIL**





# Site Photos

[www.oxford.gov.uk](http://www.oxford.gov.uk)



**OXFORD  
CITY  
COUNCIL**





# Site Photos

www.oxford.gov.uk



44





# Site Photos

gov.uk



45





# Site Photos

gov.uk



OXFORD  
CITY  
COUNCIL





# Site Photos

d.gov.uk



**OXFORD  
CITY  
COUNCIL**





# Site Photos

[-gov.uk](https://www.oxford.gov.uk)

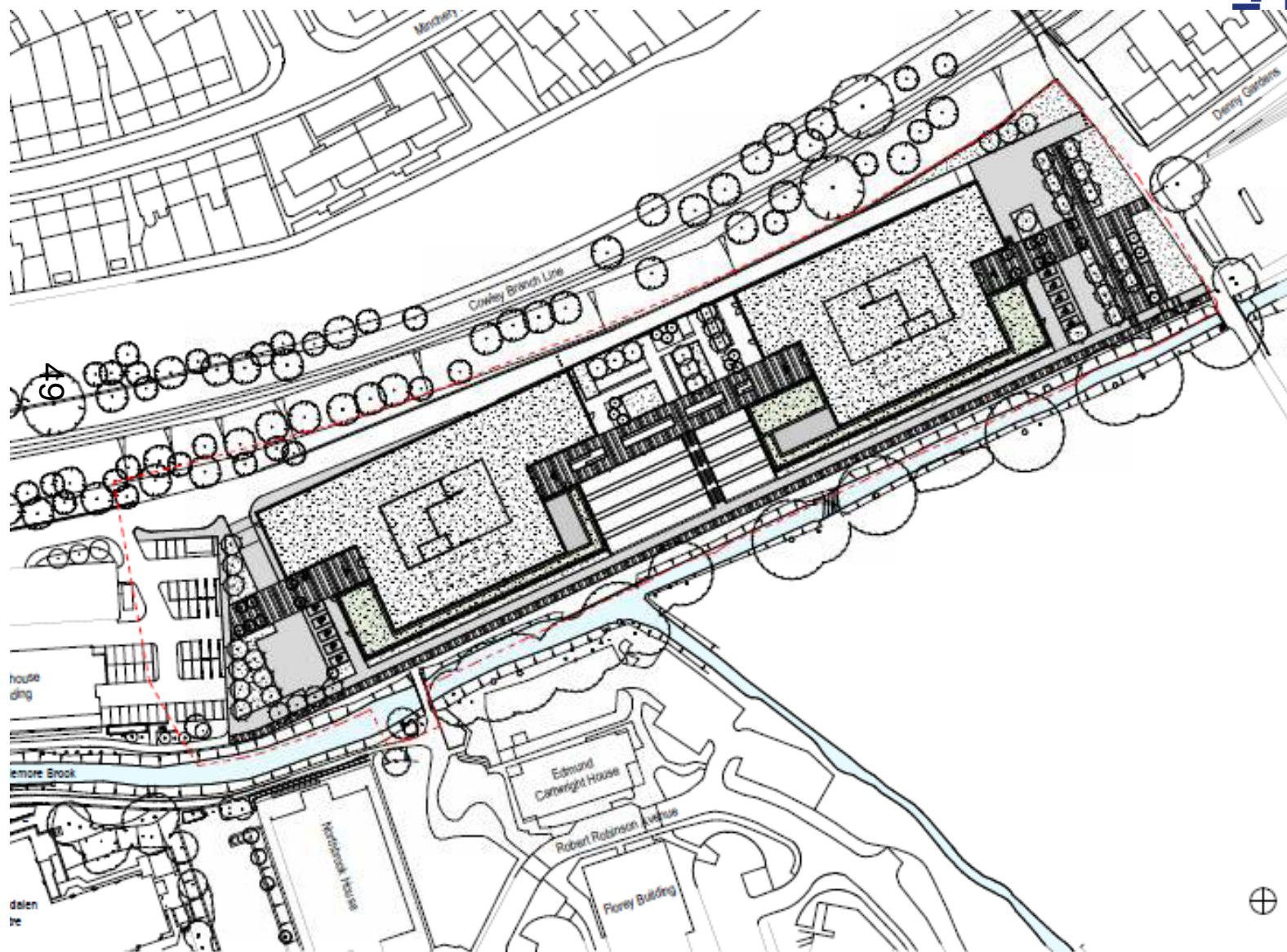


**OXFORD  
CITY  
COUNCIL**





# Site Plan



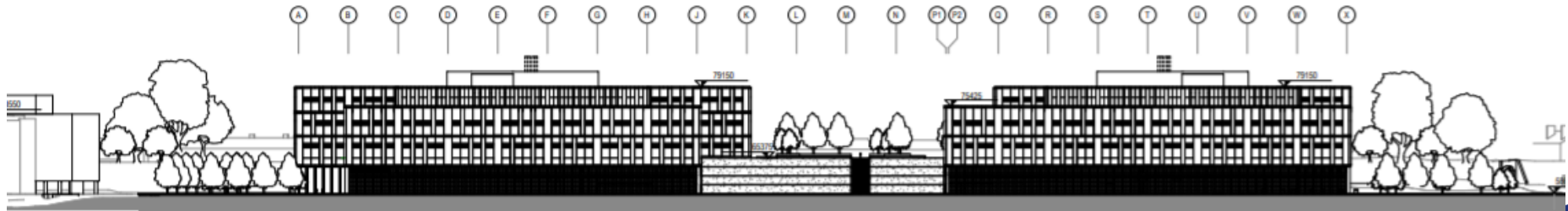
1.gov.uk



OXFORD  
CITY  
COUNCIL

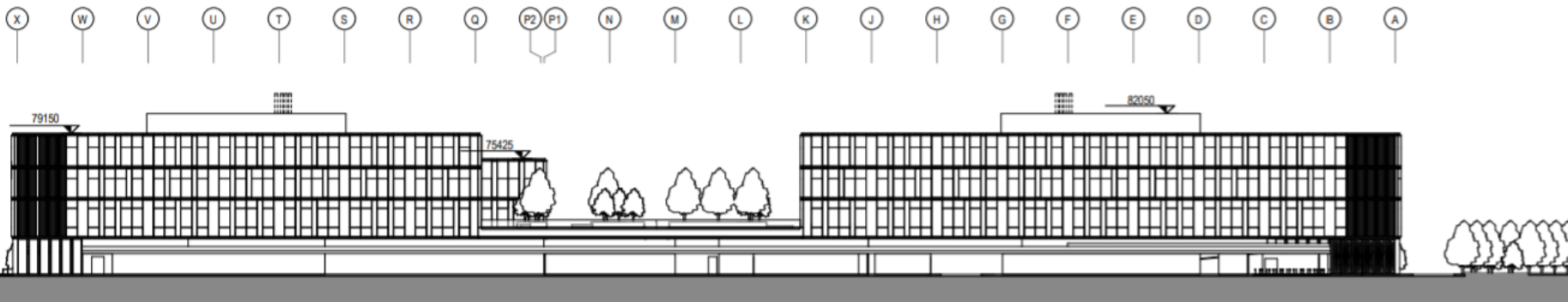


# Proposed Site Sections



Contextual South Elevation

50





# Visuals





# Visuals





# Visuals (Robert Robinson Avenue looking south adjacent to Magdalen Centre)





# Visuals





# Visuals (From St Nicholas Road)





# Entrance to site from Minchery Lane

ord.gov.uk



56

D  
IL



# Visuals (From footpath leading from Minchery Lane)





# Entrance to site from Minchery Lane with Branch Line Station

d.gov.uk



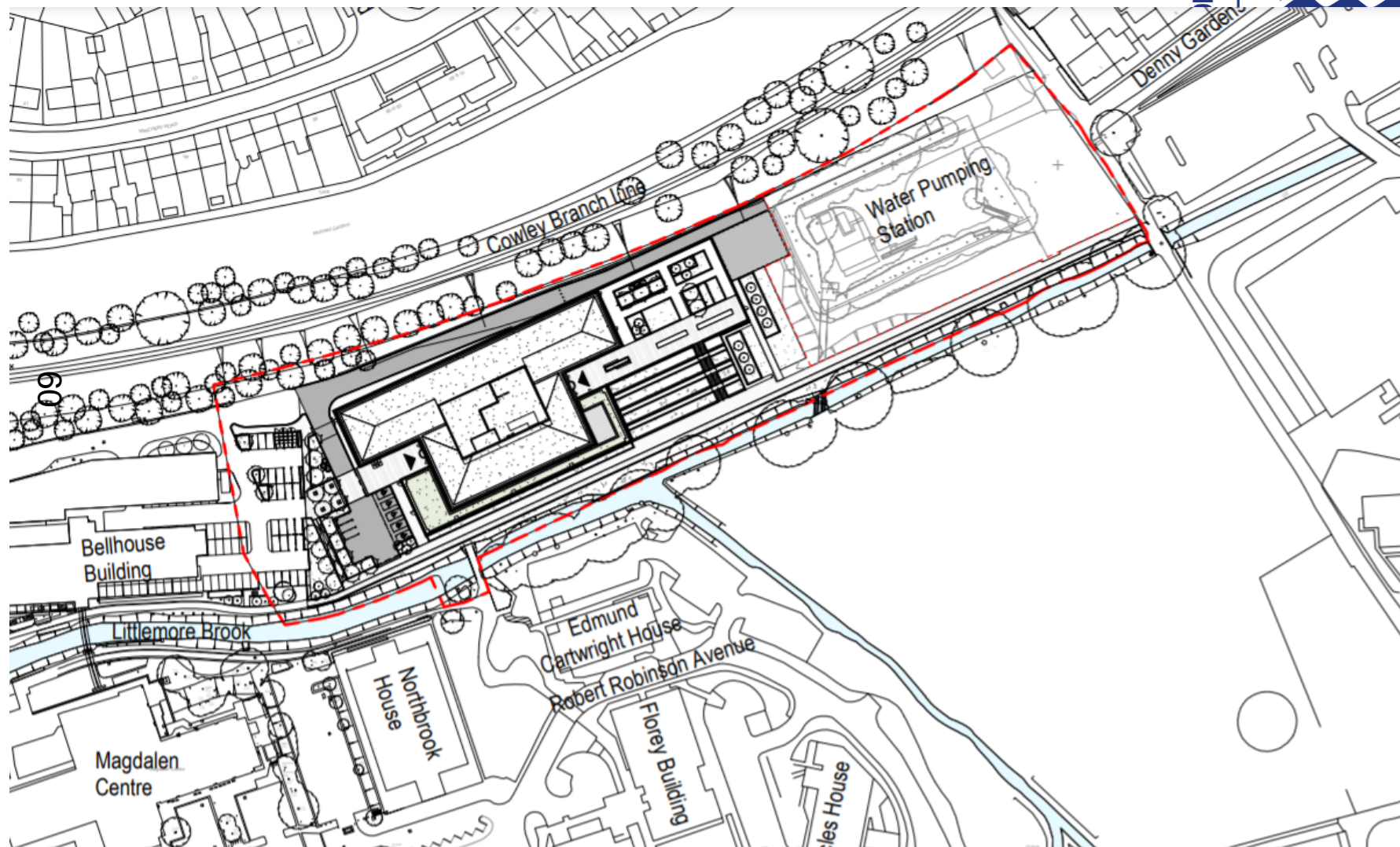


# Future Design Options (With Branch Line Station)

[www.oxford.gov.uk](http://www.oxford.gov.uk)

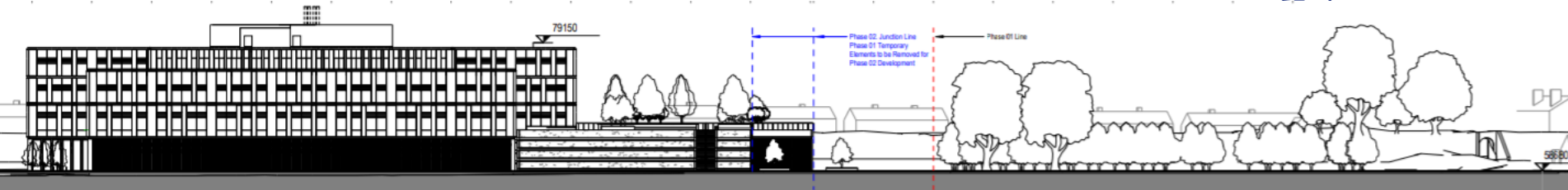


# Site Plan – Phase 1

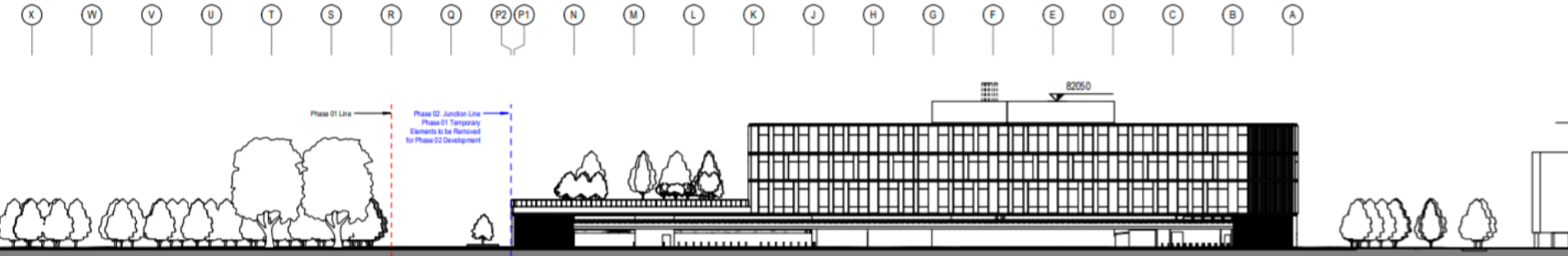




# Phased Site Sections



61



# Visuals of Building A – Phased (West View)





# Visual of Building A Phased (South View)

ford.gov.uk



OXFORD  
CITY COUNCIL



This page is intentionally left blank